

APS CHAPTER #122934

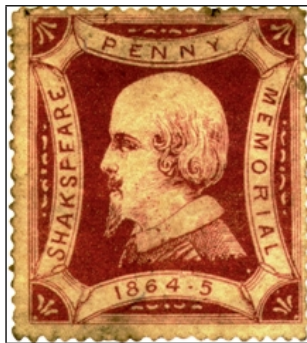


WWW.WILKINSBURGSTAMPCLUB.COM

POSTER STAMPS (CINDERELLAS)

Poster stamps (Cinderella stamps) were/are an advertising label, in most cases a little larger than most postage stamps, that originated in the mid-19th century and quickly became a collecting craze, growing in popularity until World War One and then declining by World War Two until they are now almost forgotten except by collectors of these types of "stamps." These were issued by many countries worldwide.

One of the first poster stamps was inspired by the invention of the postage stamp. A perforated label was produced in England in 1864 to celebrate the 300th anniversary of Shakespeare's birth.



Commercial interests soon realized the publicity potential of the stamps and they were quickly adopted for the promotion of every type of event, product and cause. Poster stamps were also widely used by both sides during World War One as political propaganda.

Poster and Cinderella stamps can be broken down into categories like charity seals and labels, advertising, events (philatelic and non-philatelic), etc. and for the most part produced/issued in sheets of various numbers (10, 20, 50, etc.)

Most are very colorful and may be collected as "go-with" topical items for your stamp collection(s). They come with and without dates, some with dates with and with years. They exist perforated, imperforated, rouletted, serrated and die-cut shapes.

SOME EXAMPLES OF POSTER STAMPS



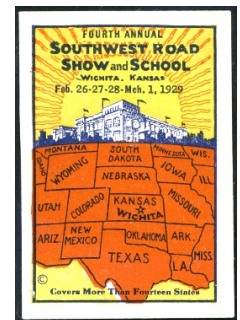
1909 AGRICULTURE EXHIBITION (GERMANY)



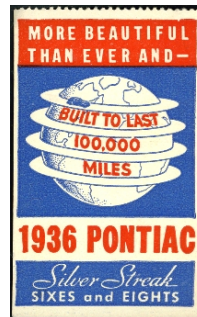
1915 SAN DIEGO EXHIBITION



1926 CLEVELAND RADIO EXPOSITION



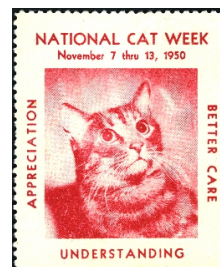
1929 SOUTHWEST ROAD SHOW AND SCHOOL



1936 PONTIAC



1940 CREDIT UNION CONVENTION



1950 NATIONAL CAT WEEK



1953 PRECANCEL SOCIETY ANNUAL CONVENTION

WILKINSBURG STAMP CLUB - DECEMBER, 2016

OFFICERS / ADDRESS / WHEN WE MEET

President: Andy Novotny
(email: novoand@hotmail.com)

Vice-President: Laura Kaczynski
(email: laurakac13@verizon.net)

Secretary: Lorraine Vincent
(email: LVincent04@aol.com)

Treasurer: Danielle Weaver
(email: dmm742000@yahoo.com)

MAILING ADDRESS: Wilkinsburg Stamp Club
P.O. Box 10552
Pittsburgh, PA 15235-0552

We meet on the second and fourth Sunday (except holidays and fourth Sunday in June, July and August) of each month. Meetings are from 12:30 P.M. until close of business, with the business meeting at 2:00 P.M. Meeting at the Churchill Borough Building, 2300 William Penn Hwy, Churchill, PA 15235.

DUES ARE ONLY \$8.00 PER YEAR (JULY-JUNE)

Newsletter Editor: Tom Reiff
(email: treiffer@msn.com)

Mailing Coordinator: Eugene Bujdos
(email: gbujdos@yahoo.com)

EDITOR'S PERSONAL NOTE...

Wishing everyone a happy Holiday Season.
I hope 2016 was good to you personally and in your "collecting world" and that 2017 will be as good or better.

DECEMBER, 2016 MEETING DATES

December 11th ONLY

December 11th – CHRISTMAS PARTY.

Please plan on attending. The more, the merrier!

**FLAT SCREEN COLOR TV AVAILABLE FOR THE
PITTSBURGH STEELERS GAMES.
*** PLEASE JOIN US *****

This newsletter is published ten times per year. Eight issues are published monthly for the months of January, February, March, April, September, October, November and December. For the months of May through August, two issues are published, one for the months of MAY-JUNE and one for the months of JULY-AUGUST.

**** OUR FISCAL YEAR IS JULY 1 – JUNE 30 ****

CLUB NEWS

ANNUAL HOLIDAY SEASON PARTY:

Our annual holiday season "party" will be held on December 11th. There will be no meeting, just friends, food and fun. The Club, as usual, will cover the expense of the chicken. Members at the October meetings and meetings in November have/will designated/designate other "goodies" that they have volunteered to bring. Tom Reiff, even though he will not be at the party this year, is planning to have his annual philatelic trivia contest available with the winner possibly receiving a "prize". This year it will be handled by Gene Bujdos. Also, members may bring in a SHOW AND TELL item (or items), philatelic or not.

PLEASE NOTE: You are welcome to bring guests, however any non-member guest will be charged a \$5.00 guest fee.

WELCOME NEW MEMBER: David Aquino is our newest member. David is from the Forest Hills area. David collects music related stamps and is a DJ. Please introduce yourself when you see him at one of our meetings and/or at one of our shows

WILKPEX 2017 DEALER UPDATE: It appears that we are FILLED! We have ten (10) dealers utilizing nineteen (19) tables.

WILKPEX 2017 CACHET UPDATE: Plans are to have a Pittsburgh Pirates Gene Baker cachet. He was the first African-American manager in Organized Baseball and in MLB.

WILKINSBURG STAMP CLUB – DECEMBER, 2016

CLARA BARTON

BORN ON CHRISTMAS DAY

AMERICAN NURSE, SUFFRAGIST AND HUMANITARIAN

Clara Barton was an American nurse, suffragist and humanitarian who is best remembered for organizing the American Red Cross. Following the outbreak of the Civil War, she independently organized relief for the wounded, often bringing her own supplies to front lines. As the war ended, she helped locate thousands of missing soldiers, including identifying the dead at Andersonville prison in Georgia. Barton lobbied for U.S. recognition of the International Committee of the Red Cross, and became president of the American branch when it was founded in 1881. Barton continued her humanitarian work throughout several foreign wars and domestic crises before her death on April 12, 1912.

Barton was born in Massachusetts On Christmas Day, December 25, 1821. She worked briefly as a schoolteacher. She became a clerk in the U.S. Patent Office in 1854, but lost the job when the Democrats won the presidency in 1856.

With the outbreak of the Civil War, Barton saw the need for an efficient organization to distribute food and medical supplies to the troops. The network, Barton believed, had to be disentangled from the bureaucracy of the War Department and the U.S. Sanitary Commission. Her work of soliciting and distributing supplies and nursing the wounded was grueling and endless. She once complained to a friend, 'I cannot tell you how many times I have moved with my whole family [the Army] of a thousand or fifteen hundred and with a half hour's notice in the night.' Her efforts, however, were much appreciated at battle sites, especially Antietam and Fredericksburg. At war's end she set up an office to sort out the difficult business of locating and identifying prisoners, missing men, and the dead buried in unmarked graves. But the strain of her work took its toll, and she was ordered to Europe by her doctor for a rest cure in 1869.

While abroad Barton came into contact with the International Committee of the Red Cross. She participated in relief efforts during the Franco-Prussian War in 1870-1871, but was forced into temporary retirement by ill health in 1872. After recovering, she campaigned to establish an American branch of the Red Cross, despite government resistance arising from fears of foreign entanglements. The U.S. Senate, after years of lobbying, finally ratified the Geneva Convention in 1882, forming the American Association of the Red Cross. Barton became its president. Her subsequent domestic program was impressive. The Red Cross provided relief at the Johnstown, Pennsylvania, flood in 1889 and after hurricanes in the Sea Islands off the southeastern coast in 1893.

The organization also marshaled support for international campaigns, sending supplies to Russia during a famine in 1892 and to Armenia in 1896.

Barton, at the age of seventy-seven, distinguished herself again, this time in Cuba during the Spanish-American conflict. But her presence on the battlefield called her methods into question and widened a rift between the national Red Cross and its local chapters. Barton was unwilling to delegate responsibility and her inability to do so was a drawback sustained within the ranks of the Red Cross. Her inflexibility forced her to resign in 1904 from the organization she had founded and built. Barton nevertheless remained active and involved in relief work until her death at the age of ninety-one. Her energy and commitment to humanitarian causes over a forty-year period has made her a household name, a symbol of charitable self-sacrifice.

Trivia - While tending the wounded at the Battle of Antietam, Clara Barton worked so close to the battlefield that a bullet once tore through her sleeve and killed a man she was treating.

BELOW ARE SOME STAMPS IMAGES COMMEMORATING CLARA BARTON, RED CROSS AND NURSING. A GREAT TOPIC TO COLLECT



**1948 UNITED STATES
(Scott #967)**



**2012 CENTRAL AFRICAN
REPUBLIC (FROM SS)**



**1995 UNITED STATES
Scott #2975c)**



**1938 MANCHUKUO
(RED CROSS -Scott #129)**



**1964 SOUTH AFRICA (NURSING)
(Scott #305)**

WILKINSBURG STAMP CLUB - DECEMBER, 2016

MARK YOUR CALENDARS

**Upcoming
Stamp, Postcard and Collectible Shows**

STAMP SHOW – November 5-6 – PITTPEX '165 South Fayette Fire Hall, 661 Millers Run Rd., Bridgeville, PA Sat. 10AM – 5PM Sun 10AM – 4PM FREE

STAMP SHOW – December 3 - 4 – Columbus, Ohio – Worthington Stamp Club Annual Show and Bourse. Disalle Center at the Ohio Expo Center, 717 E. 17th Avenue. Saturday 10 AM-6 PM, Sunday 10AM-3PM.

STAMP SHOW – December 4 - MARS, PA – K2 Collectibles (Kevin Kellman) – VFW Post 7505, 331 Mars Valencia Road, Mars Pa. Sunday, 10AM – 4PM

STAMP SHOW - January 20-21, 2017 YORK, PA - York County Stamp Show White Rose Philatelic Society of York, York Fairgrounds, Horticulture Hall, 334 Carlisle Avenue.

STAMP SHOW - March 7-8, 2017 - NORTH CANTON, OHIO - McKinley Stamp Show McKinley Stamp Club, St. George Serbian Orthodox Social Hall, 4667 Applegrove St., NW. Saturday 10 AM-5 PM, Sunday 10AM-4PM.

STAMP SHOW - March 4-5, 2017 BUFFALO, NY – BUFPEX 2014 Buffalo Stamp Club VFW Leonard Post, 2450 Walden Avenue, Cheektowaga. Regional/Local Show with exhibits;

STAMP SHOW – March 23-25, 2017 – CLEVELAND, OHIO – Garfield Perry March Party – 127th Annual Stamp Exhibition & Bourse. La Villa Conference and Banquet Center, 11500 Brookpark Road, Cleveland, Ohio 44130.

ATTEND A SHOW – FIND A TREASURE



DESIGNER

T. M. CLELAND

SALES \$1,040,810

**100 YEARS AGO
1916 CHRISTMAS SEAL (Scott #WX18)**

PITTSBURGH AREA STAMP CLUB WEBSITES

Here are our local stamp clubs Internet Web Sites. Once you access this URL, you may be able to navigate to other parts of the web site.

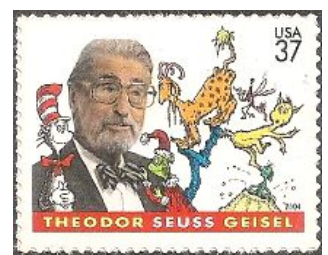
WESTMORELAND COUNTY PHILATELIC SOCIETY
<http://www.muleshoepa.com/WCPS/WCPS.HTM>

PHILATELIC SOCIETY OF PITTSBURGH
<http://www.presidentdrive.com>

50 YEARS AGO – DECEMBER 1966



**2001 PORTUGAL
(WALT DISNEY)
(Scott #2445)**



**2004 THEODOR SEUSS
GEISEL (THE GRINCH)
(Scott #3835)**

**HISTORICAL FACTS WITH PHILATELIC CONNECTIONS.
OVER THE YEARS, STAMPS HAVE BEEN ISSUED FOR
WALT DISNEY AND HIS MANY CHARACTERS AND
THEODOR SEUSS GEISEL AND HIS BOOK CHARACTERS
INCLUDING THE GRINCH.**

DECEMBER 15, 1966 - DIED: Walt Disney, 65, American animated film producer who founded an independent film company into a multimillion-dollar empire of film studios and amusement parks, died at St. Joseph Hospital in Burbank, California. The immediate cause of death was acute circulatory collapse that had been brought on by lung cancer. Flags on all government buildings in Los Angeles County were ordered lowered to half staff in his honor.

DECEMBER 18, 1966 - *How the Grinch Stole Christmas*, based on the book by Dr. Seuss (Theodor Geisel) and narrated by Boris Karloff, was shown for the first time on CBS, beginning an annual Christmas tradition in the United States. "As a result of the television version," an author would note later, "adults and children renewed their love of Seussian tales and bought his books in record-breaking numbers." Geisel initially rejected an offer by his friend, animator Chuck Jones, to adapt the book to an animated cartoon; his wife Helen Geisel persuaded him to reconsider.